

# LP-IR-DT

## Infrared Motion Sensor

### Data Sheet



LP-IR-DT Infrared Motion Sensor

Triatek's LP-IR-DT Infrared Motion Sensor provides the maximum motion detection available in sensors on the market. This microprocessor-based sensor is self-adjusting and self-calibrating. Simply mount the LP-IR-DT, and after a four week data collecting period the sensor will self-adjust for optimal energy savings. These settings are saved in non-volatile memory so they are not lost during power failure.

Additionally, building automation systems (BAS) can monitor and control the HVAC loads based on actual room occupancy. This provides the building owner with the maximum energy savings.

#### FEATURES INCLUDE

- Easy installation
- Microprocessor-based
- Simple 24 VDC power
- Maximizes energy savings
- Detects motion using dual technology
- HVAC loads controlled based on actual room occupancy
- Flashing LED provides current status and timer settings
- Self-calibrating
- Settings stored in non-volatile memory

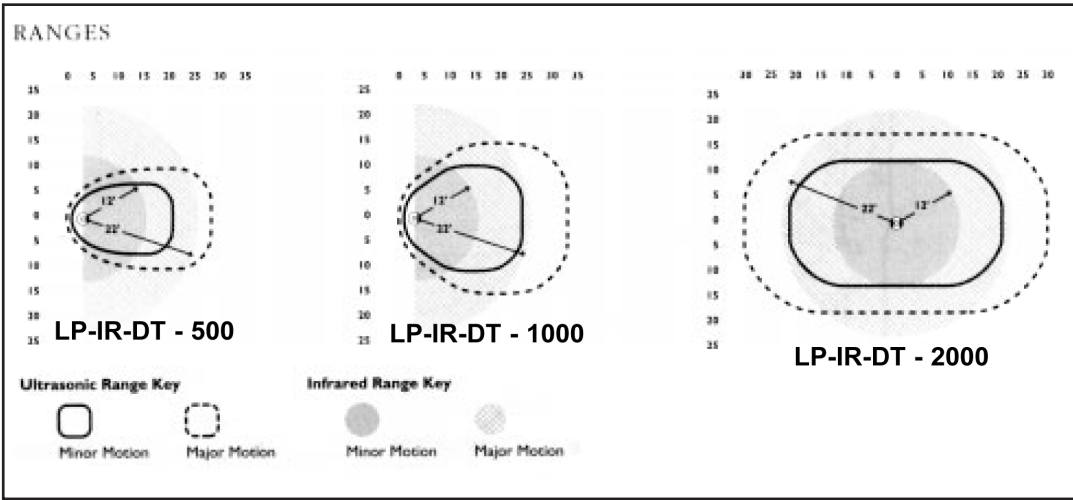
# LP-IR-DT

## Infrared Motion Sensor

*Data Sheet*

LP-IR-DT Specifications	
Operating Voltage	24 VDC
Control Voltage	Occupied 24 VDC
Power Consumption	33 milliamps
Time Delay	8 min to 30 min, self adjusting
Relative Humidity	0 - 95% Non-condensing
Operating Temperature	32° to 104° F
Wiring	Low voltage, AWG Class 2
Coverage	LP-IR-DT - 500: 500 sq. ft. coverage; 180° field of view LP-IR-DT - 1000: 1000 sq. ft. coverage; 180° field of view LP-IR-DT - 2000: 2000 sq. ft. coverage; 360° field of view

Product specifications are subject to change without notice. Triatek is a registered trademark of Triatek LLC.



### Ordering Instructions

- LP-IR-DT - 500 (500 sq. ft. coverage; 180° field of view)
- LP-IR-DT - 1000 (1000 sq. ft. coverage; 180° field of view)
- LP-IR-DT - 2000 (2000 sq. ft. coverage; 360° field of view)

### Wiring Diagram

