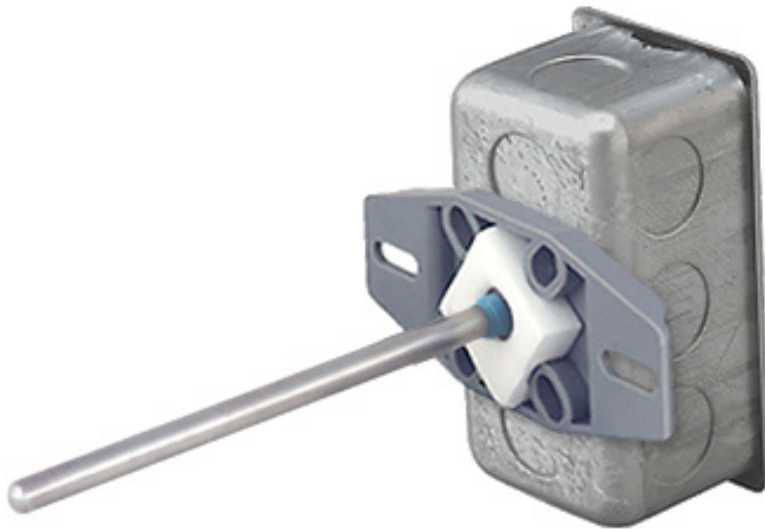


Duct Temperature Probe

Data Sheet



Duct Temperature Probe

Triatek's Duct Temperature Probe is a sensor used to monitor the temperature for supply air, return air, exhaust air, and reheat air.

It features closed cell foam to seal the probe access area and absorb vibration. Mounting tabs allow for easy installation directly into the wall of the duct.


All units have etched Teflon leadwires and double encapsulated sensors to create a watertight package that can withstand high humidity and condensation and perform under real world conditions.

FEATURES INCLUDE

- Galvanized steel J-Box enclosure
- BACnet[®] and LonWorks[®] compatible
- Watertight package
- Etched Teflon leadwires
- Double encapsulated sensors
- Standard probe is 8" long
- Customized lengths available if required

Duct Temperature Probe

Data Sheet

Duct Temperature Probe Specifications	
Temperature Sensor	10K-2 Thermistor
Probe Length	8" [203 mm]
Enclosure	J-Box galvanized steel
Environmental Operation Range	-40 to 105 °C Humidity: 0 to 100%, non-condensing
Certifications	
Dimensions	4.2" [106 mm] 3.9" [98.4mm] 1.94" [49 mm]

Product specifications are subject to change without notice. Triatek is a registered trademark of Triatek LLC. 100110

Ordering Guide:

BACnet: TX10K2D8

LON: TX165010K2D8

